



GMT MONTHLY MEMBERSHIP PROGRESS REPORT

Results as of: 2/29/2020

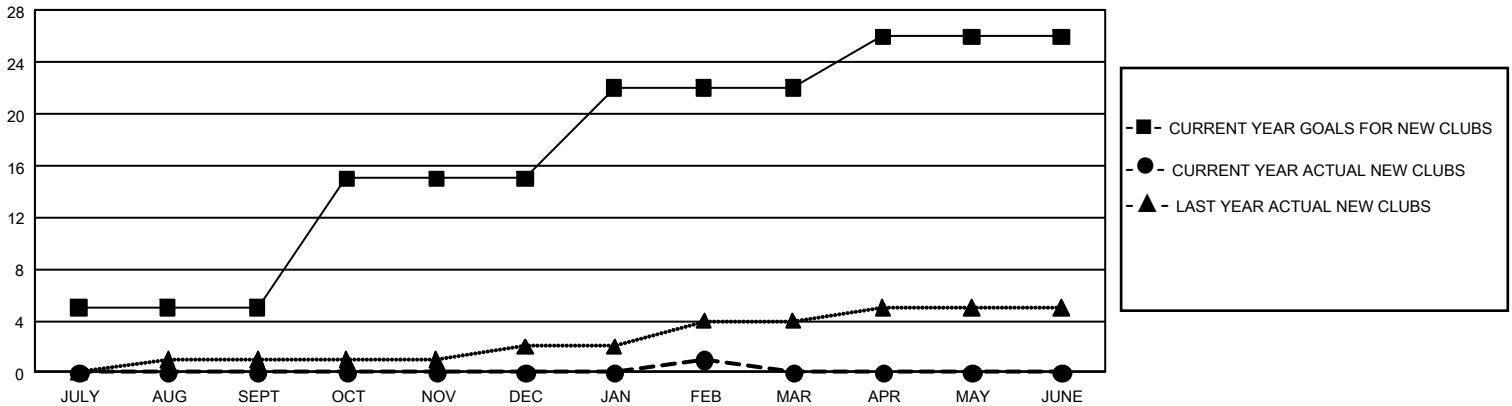
GMT Constitutional Area 5 - J, Group J

GMT: OPEN

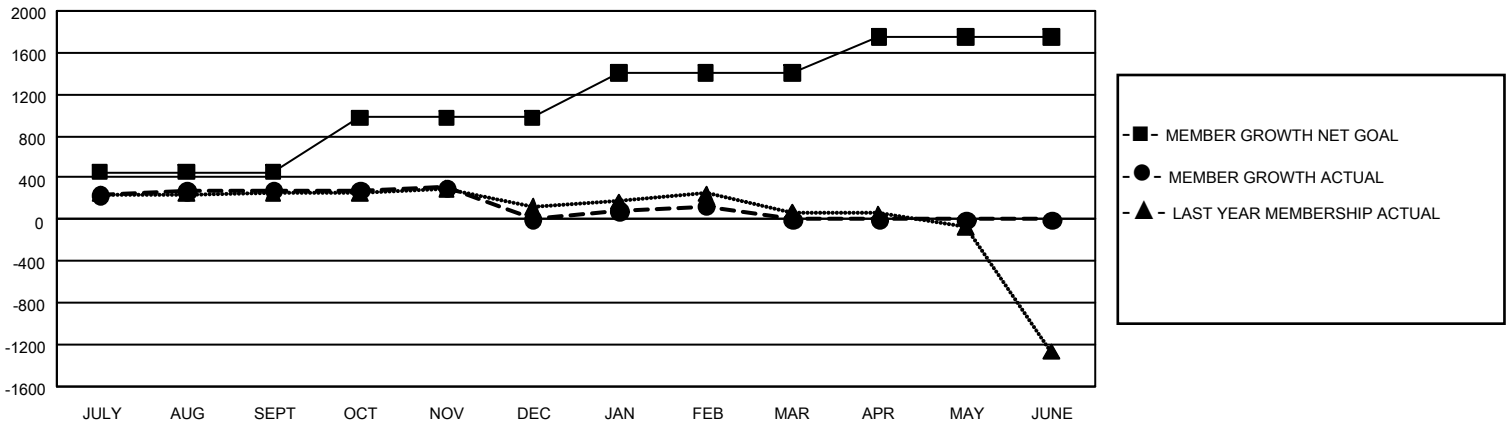
REPORT DOES NOT INCLUDE CLUBS IN UNDISTRICTED AREAS.

Clubs				Members			
RESULTS FOR 2019-2020				RESULTS FOR 2019-2020			
QUARTER	NEW CLUB GOAL	NEW CLUBS	DROPPED CLUBS	QUARTER	MEMBER GROWTH NET GOAL	MEMBER GROWTH ACTUAL	DROPPED MEMBERS ACTUAL (including transfers)
JULY/AUG/SEPT	15	0	1	JULY/AUG/SEPT	1,356	864	532
OCT/NOV/DEC	30	0	1	OCT/NOV/DEC	1,572	397	654
JAN/FEB/MAR	21	1	1	JAN/FEB/MAR	1,284	391	251
APR/MAY/JUNE	12	0	0	APR/MAY/JUNE	1,038	0	0

GOALS AND ACTUAL NEW CLUBS CUMULATIVE



GOALS AND ACTUAL MEMBERS CUMULATIVE



DROPPED CLUBS: 3	543 CLUBS OF 796 ADDED 1 OR MORE NEW MEMBERS	<u>GENDER DISTRIBUTION</u> MALE 23,645 (78.26%) FEMALE 6,570 (21.74%)
<u>DROPPED MEMBERS</u> DECEASED 151 CLUB CANCELLED 8 OTHER 1,278 <hr/> TOTAL 1,437	CLICK HERE FOR CUMULATIVE MEMBERSHIP DATA	TOTAL FAMILY UNIT MEMBERS 8,736 FAMILY MEMBERS PAYING HALF DUES 4,737